



Broomwood Road, SW11

A bright two double bedroom flat a stone's throw from the Northcote Road.

**2 BEDROOMS | 1 BATHROOM**

Reception room/open-plan kitchen | Two double bedrooms | Bathroom | Part-furnished | 540 sq. ft. / 50.17 sq. m | EPC rating: D | Council tax band: C



**ASKING PRICE:  
£2,750 PCM**

PART - FURNISHED  
BOROUGH OF WANDSWORTH

**SCHOOLS**

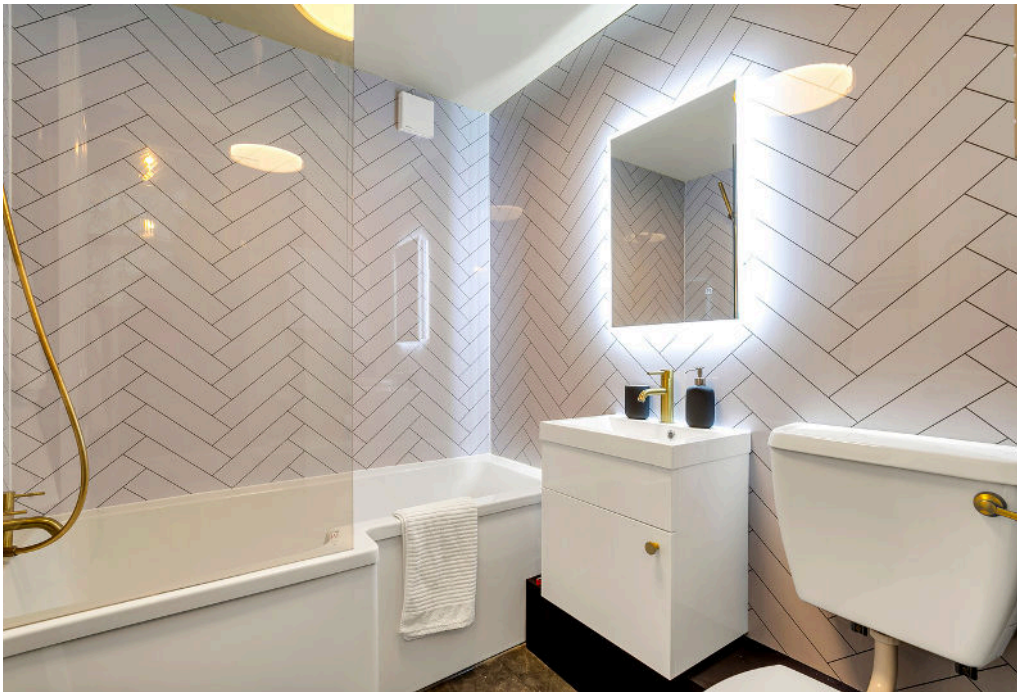
Honeywell School	0.1	miles
Thomas's Clapham	0.2	miles
Belleville School	0.4	miles

**TRANSPORT**

Wandsworth Common	0.6	miles
Clapham Junction	0.8	miles
Clapham South	0.9	miles

**AMENITIES**

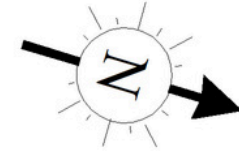
Northcote Road	0.0	miles
Wandsworth Common	0.2	miles
Bellevue Road	0.6	miles



# BROOMWOOD ROAD, SW11

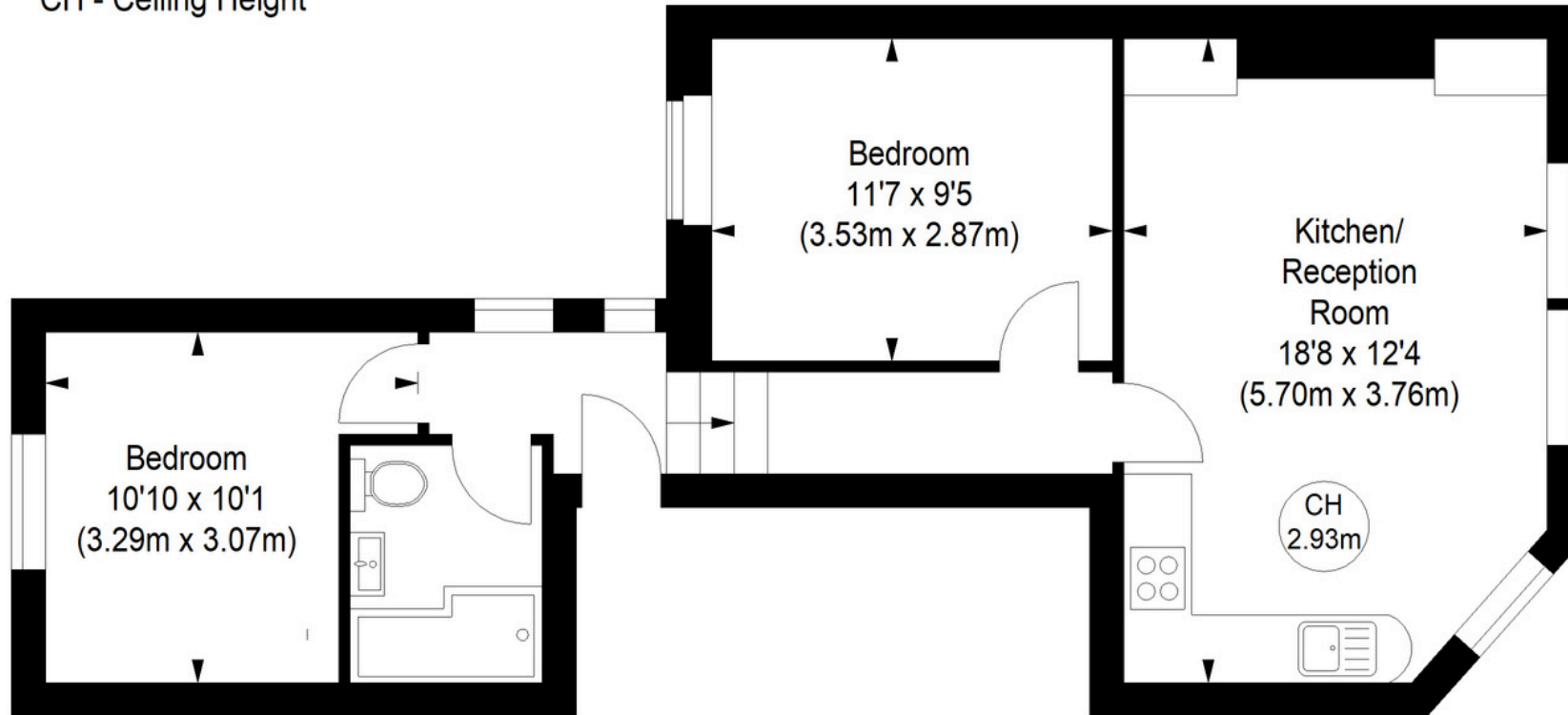
Approximate gross internal area

540 sq ft / 50.17 sq m



Key :

CH - Ceiling Height



## FIRST FLOOR

Although every attempt has been made to ensure accuracy, all measurements are approximate.

This floorplan is for illustrative purposes only and not to scale.

Measured in accordance with RICS standards.



CHELWOOD PARTNERS

Please get in touch.

**Gemma Harvey-Perry**

Partner

07813 669 565

[gemma@chelwoodpartners.com](mailto:gemma@chelwoodpartners.com)

**Katie Godman**

Lettings

07795 155 157

[katie@chelwoodpartners.com](mailto:katie@chelwoodpartners.com)

**Chelwood Partners**

The Old Print House, 173 Northcote Road, London SW11 6QE

[chelwoodpartners.com](http://chelwoodpartners.com)

IMPORTANT: Chelwood Partners Ltd would like to inform prospective purchasers/tenants that these sales or lettings particulars have been prepared as a general guide only and are not an offer or contract, nor part of one. Furthermore they assume no responsibility for any statement that may be made in these particulars. Chelwood Partners Ltd have not conducted a detailed survey, nor have they tested the services, appliances and fittings. Any floorplan is for guidance purposes only, may not be to scale and should not be relied upon. Any reference to alterations to, or use of, any part of the property does not mean that any necessary planning, building regulations or other consent has been obtained. Purchasers/tenants must satisfy themselves by inspection or otherwise.